

# UL20

## Accessories Guide



# UL20 ACC. Map

## 2 slot Power Supply



UL20-PWSP-2XX



## 2 slot Cradle



2-Slot charging & USB host client /  
UL20-2CRD-CU0



2-Slot charging & Ethernet USB host client /  
UL20-2CRD-EU0

## 8 slot Cradle



8-Slot charging only cradle /  
UL20-8CRD-C00



8-Slot charging & Ethernet cradle /  
UL20-8CRD-E00



## Forklift



Forklift/Vehicle charging station /  
UL20-VCRD-CU0



Forklift Socket Arm mount/  
UNIV-RAMM



Clamp Base/  
UNIV-RAMC



U-bolt base /  
UNIV-RAMU



## Forklift Cable / Cradle Kits



Forklift power input cable /  
UNIV-CABL-VC



Voltage Power Converter/  
UNIV-PWSP-F00



U-bolt Type Forklift Cradle Kits /  
UL20-CPAK-FCRD-UB



Square Type Forklift Cradle Kits /  
UL20-CPAK-FCRD-SQ

## Battery Charger



4 Slot Battery Charging Station /  
UL20-04BC-C00



## Battery



BATTERY-Frozen 6700mAh /  
UL20-BATT-F67



BATTERY-STD 6700mAh /  
UL20-BATT-S67

## 8 slot Power Supply



UL20-PWSP-8XX

## Etc



Wire Plate  
UL20-WIPL-U00  
UL20-WIPL-W00



Soft type Fabric Holster  
UL20-CASE-FSH



Screen Protector  
UL20-SCPR



Hard type Fabric Holster  
UL20-CASE-FHH

## Trigger Handle



Scanning Trigger Handle for UL20 /  
UL20-TRIG-S00

## Vehicle



Forklift/Vehicle charging station /  
UL20-VCRD-CU0



Ram Mount(Screw) /  
UNIV-RAMT



Ram Mount(Suction) /  
UNIV-RAMS



Auto Adapter/  
UNIV-PWSP-VVC



## Vehicle Cable / cradle Kits



Power Converter /  
UNIV-PWSP-F00



Vehicle/Forklift Cradle USB Host /  
UNIV-CABL-UVH



Vehicle/Forklift Cradle USB Client/  
UNIV-CABL-UVC



Vehicle Cradle Kits  
UL20-CPAK-VCRD

## Boot



Rubber Boot/  
UL20-BOOT-01



USB cable/  
UL20-CABL-  
UCA



Hand Stra  
UL20-STRP-  
(S10 or S50)



Spare Stylus  
UL20-STYL

# 2 Slot Cradle

Charging

Compatible



## UL20-2CRD-CU0

2-Slot charging & USB host client cradle

MODEL	UL20-2CRD-CU0
I/O	DC / USB A ( HOST ), USB C ( CLIENT ), ETHERNET PORT
Input	12V / 3A
Dimension	125 x 177 x 101mm
Compatibility	UL20

## UL20-2CRD-EU0

2-Slot charging & Ethernet USB client cradle

MODEL	UL20-2CRD-EU0
I/O	DC / USB A ( HOST ), USB C ( CLIENT ), ETHERNET PORT
Input	12V / 3A
Dimension	125 x 177 x 101mm
Compatibility	UL20

## UL20-PWSP-2XX

Power Supply for 2-Slot Cradle

# Power Supply



## UL20-PWSP-2XX

Power Supply for 2-Slot Cradle

MODEL	UL20-PWSP-2XX
Input	100~240VAC
Output	12VDC / 3A
Dimension	(W*D*H) = 372.9 x 150 x 53.7mm
Compatibility	UL20

Depending on the type of connector at the end

US20-PWSP-2 **EU**  
US20-PWSP-2 **AU**  
US20-PWSP-2 **KR**  
US20-PWSP-2 **UK**  
US20-PWSP-2 **US**  
US20-PWSP-2 **CN**

## Compatible



### UL20-2CRD-CU0

2-Slot charging & USB host client



### UL20-2CRD-EU0

2-Slot charging &  
Ethernet USB host client

# 8 Slot Cradle

Charging



## Compatible



UL20



UL20-PWSP-2XX

Power Supply for  
2-Slot Cradle

### UL20-8CRD-C00

8-Slot charging & USB host client cradle

MODEL	UL20-8CRD-C00
I/O	DIN4 / ETHERNET PORT
Input	12V / 12.5A
Dimension	503 x 177 x 101mm
Compatibility	US30

### UL20-8CRD-E00

8-Slot charging & Ethernet USB client cradle

MODEL	UL20-8CRD-E00
I/O	DIN4 / ETHERNET PORT
Input	12V / 12.5A
Dimension	503 x 177 x 101mm
Compatibility	US30

# Power Supply



## UL20-PWSP-8XX

Power Supply for 8-Slot Cradle

MODEL	UL20-PWSP-8XX
I/O	DIN4
Input	12V / 12.5A
Dimension	372.9 x 150 x 53.7mm
Compatibility	UL20

Depending on the type of connector at the end

US20-PWSP-2 **EU**  
US20-PWSP-2 **AU**  
US20-PWSP-2 **KR**  
US20-PWSP-2 **UK**  
US20-PWSP-2 **US**  
US20-PWSP-2 **CN**

## Compatible



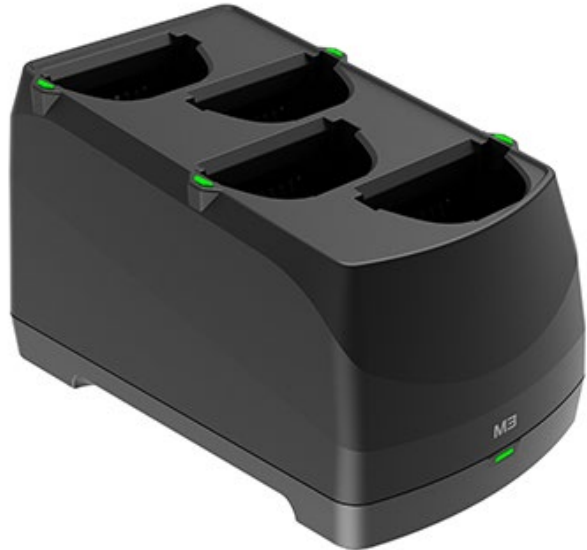
**UL20-8CRD-C00**  
8 Slot Cradle Charge



**UL20-8CRD-E00**  
8 Slot Cradle Charge Ethernet

# Battery Charger

Charging



## UL20-04BC-C00

M3 Battery charging station for UL20,  
4 Slot Battery Charging Station.

<b>MODEL</b>	<b>UL20-04BC-C00</b>
I/O	DC
Input	2V / 3A
Dimension	110 x 177.2x 105mm
Compatibility	UL20

## Compatible



### UL20-BATT-F67

BATTERY-Frozen 6700mAh



### UL20-BATT-S67

BATTERY-STD 6700mAh

# Battery



## UL20-BATT-F67(-S10)

UL20F Frozen Fast Charging Standard Capacity Spare Battery 6,700mAh

MODEL	UL20-BATT-F67(-S10)
Dimension	56x 109 x 24.1mm
Compatibility	UL20



## UL20-BATT-S67(-S10)

UL20W & UL20X Fast Charging Standard Capacity Spare Battery 6,700mAh (10 pcs)

MODEL	UL20-BATT-S67(-S10)
Dimension	56x 109 x 24.1mm
Compatibility	UL20



# Trigger



## UL20-TRIG-S00

Trigger Handle for UL20

MODEL	UL20-BATT-F67(-S10)
Dimension	90 x 245 x 170mm
Weight	345g
Compatibility	UL20

Compatible



UL20



## UL20-BOOT-01

Rubber boot

<b>MODEL</b>	<b>UL20-BOOT-01</b>
Dimension	85x 245 x 49mm
Weight	105g
Compatibility	UL20

# Boot

## Compatible



**UL20**

# UL20-CPAK-VCRD Vehicle

## Charging & Data communications

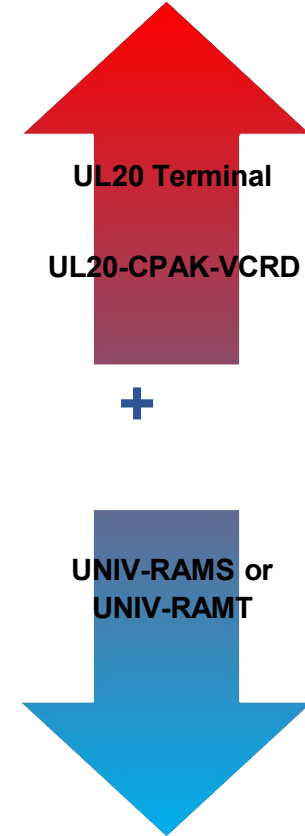
UL20-VCRD-CU0  
+  
UNIV-PWSP-VVC  
+  
UNIV-CABL-UVH  
+  
UNIV-CABL-UVC



UNIV-RAMS  
Vehicle Mount by suction



UNIV-RAMT  
Vehicle Mount by tighten screw



Compatible

UL20-CPAK-VCRD is Vehicle Cradle Kits;  
Includes Vehicle charging station, Auto Adapter, USB Client/Host Cable Order Separately: Ram Mount  
(UNIV-RAMT or UNIV-RAMS)

# UL20-CPAK-VCRD

# Vehicle

## Component

### UL20-VCRD-CU0

UL20 vehicle cradle body



### UNIV-CABL-UVH

USB female cable connection to the cradle body



### UNIV-PWSP-VVC

Auto Charger Cable Input  
12-24VDC / Output 5VDC, 2A



### UNIV-CABL-UVC

USB male cable connection to the cradle body



**UL20-CPAK-VCRD**

UL20-VCRD-CU0

UNIV-PWSP-VVC

UNIV-CABL-UVH or +

UNIV-CABL-UVC

UNIV-RAMS  
or  
UNIV-RAMT

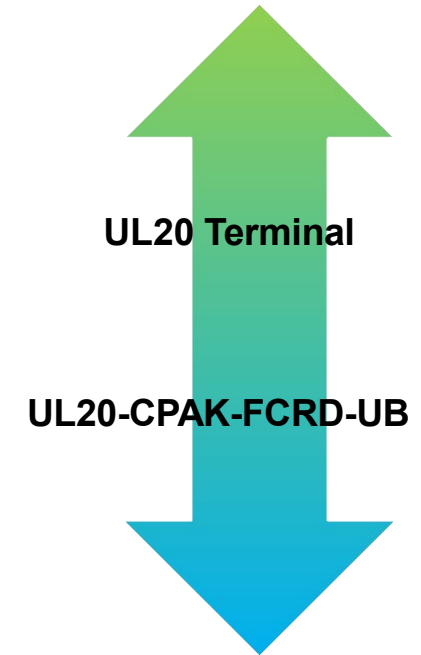
# UL20-CPAK-FCRD-UB

## Charging & Data communications

- UNIV-RAMM
- + UNIV-RAMU
- + UNIV-CABL-VC
- + UNIV-PWSP-F00
- +UNIV-CABL-UVH
- +UNIV-CABL-UVC



# Forklift



Compatible

U-bolt Type Forklift Cradle Kits;  
Includes Forklift charging station, Vehicle mount, U-bolt base,  
Voltage Power Converter,  
Forklift power input cable, USB Client/Host Cable

# UL20-CPAK-FCRD-UB

## Component

# Forklift

### UL20-VCRD-CU0

UL20 vehicle cradle body



### UNIV-RAMM

RAM® Double Socket Arm mount for Forklift Cradle



### UNIV-RAMU

U-bolt base for Forklift Cradle.  
Attach to the forklift Socket Arm mount.



### UNIV-CABL-VC

power extend input cable  
Length : 1M



# UL20-CPAK-FCRD-UB

# Forklift

## Component

### UNIV-CABL-UVH

USB female cable connection to the cradle body



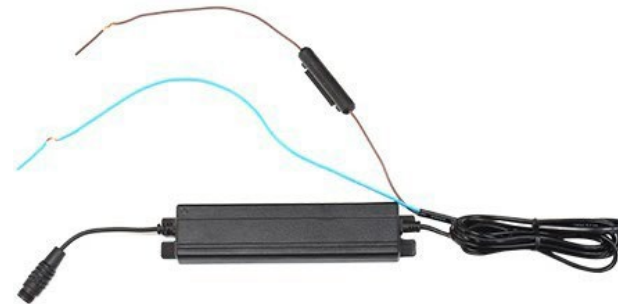
### UNIV-CABL-UVC

USB male cable connection to the cradle body



### UNIV-PWSP-F00

Power Converter, I  
NPUT : DC 24V ~ DC 96.V, O  
UTPUT : DC 12V / 5A



UL20-CPAK-FCRD-UB

UL20-VCRD-CU0

UNIV-RAMM U  
UNIV-CABL-VC

UNIV-RAMU UNIV-  
PWSP-F00

UNIV-CABL-UVH or UNIV-CABL-UVC

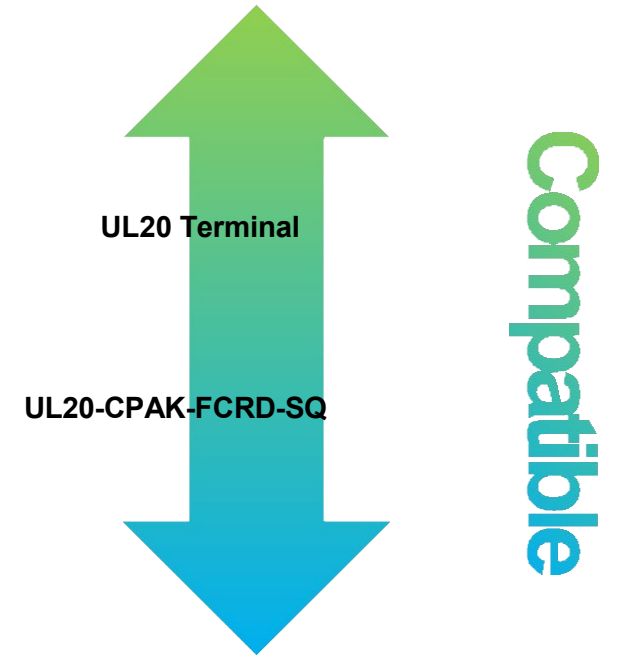
# UL20-CPAK-FCRD-SQ

Charging & Data communications

- UNIV-RAMM
- + UNIV-RAMC
- +UNIV-CABL-VC
- + UNIV-PWSP-F00
- +UNIV-CABL-UVH
- +UNIV-CABL-UVC



# Forklift



Square Type Forklift Cradle Kits;  
Includes Forklift charging station, Vehicle mount, Clamp base, Voltage Power Converter, Forklift power input cable,  
USB Client/Host Cable



# UL20-CPAK-FCRD-SQ

# Forklift

## Component

### UL20-VCRD-CU0

UL20 vehicle cradle body



### UNIV-RAMM

RAM® Double Socket Arm mount for Forklift Cradle



### UNIV-RAMC

Clamp base for Forklift Cradle  
Attach to the forklift Socket Arm mount.



### UNIV-CABL-VC

power extend input cable  
Length : 1M



### UNIV-RAMU

U-bolt base for Forklift Cradle.  
Attach to the forklift Socket Arm mount



# UL20-CPAK-FCRD-SQ

## Component

### UNIV-CABL-UVH

USB female cable connection to the cradle body



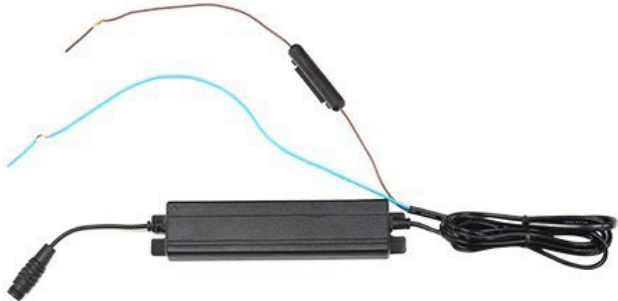
### UNIV-CABL-UVC

USB male cable connection to the cradle body



### UNIV-PWSP-F00

Power Converter, I  
NPUT : DC 24V ~ DC 96.V, O  
UTPUT : DC 12V / 5A



UL20-CPAK-FCRD-SQ

UL20-VCRD-CU0

UNIV-RAMM U  
UNIV-CABL-VC

UNIV-RAMC UNIV-  
PWSP-F00

UNIV-CABL-UVH or UNIV-CABL-UVC

**UL20-STRP-(S10 or S50)**  
Hand Strap for UL20 (10 pcs or 50 pcs)

**etc.**  
Miscellaneous



**UL20-CASE-FHH**

Fabric Holster with belt, Side attach, Hard type



**UL20-CASE-FSH**

Fabric Holster soft type with Strap, belt



**UL20-STRP-(S10 or S50)**

Hand Strap for UL20 (10 pcs or 50 pcs)



**UL20-CABL-UCA**

USB cable, 1.2M, C to A plug



**UL20-STYL**

Spare Stylus with  
tether for UL20



**UL20-WIPL-U00**

Wire Plate

**UL20-WIPL-W00**

Wire Plate(2m)



**UL20-SCPR**

Screen Protector

**UL20-SCPR-G**

Anti Glare Screen Protector