

M3 SM30

User Manual

Version 2.0

© 2026 M3 Mobile Co., Ltd. All rights reserved.

Korea Headquarters Seoul, Korea | sales@m3mobile.co.kr | +82 2 574 0037

Europe Headquarters Germany, Kriftel | sales_eu@m3mobile.net | +49 6192 9222153

www.m3mobile.net / www.m3mobile.co.kr

Revision

- Release date of Version 1.0: Sep. 2025
- Revision date of Version 2.0: Apr. 2026

Terms of Use

Thank you for purchasing M3 SM30. This device provides high performance data collection and mobile communications that meet industrial standards.

This user manual enables users to know the characteristics of M3 SM30 series and how to use it.

- Please carefully read this manual before using the device to ensure safe and proper use, as well as to prevent accidents that may occur when the device is used.
- This manual is created based on current status. The details on this manual may be changed without prior notice.
- The descriptions of this manual are based on the device's default settings.
- Images and screenshots are described with the latest software version.
- This manual is created under the assumption that the device has all options. For detailed information on available options, contact the local distributor or refer to our Web site (<http://www.m3mobile.net>).
- M3 Mobile does not have any legal responsibility for any performance problem that may occur when a user uses an application that is supplied by a third party.
- M3 Mobile does not have any legal responsibility for any performance degradation or compatibility problem that may occur because of the user's mistake or negligence.
- M3 Mobile does not have any legal responsibility for copyright or patent breach by the user.
- M3 Mobile can request all or part of the applications developed by a user or a third party. The request is for the improvement of user environment or device performance.
- Higher OS version may be released after you purchase the device with the existing OS. If you want to receive information on the latest OS, please contact your local distributor.
- This device can be operated in at least one Member State without infringing applicable requirements on the use of radio spectrum.
- This manual may include technical or editing errors.

Copyright

Copyright © 2025 M3 Mobile Co., Ltd.

This manual is protected under international copyright laws. No part of this manual may be reproduced, distributed, translated, or transmitted in any form or by any means, electronic or mechanical, including photocopying, recording, or storing in any information storage and retrieval system, without the prior written permission of M3 Mobile.

Trademarks

- M3 Mobile and M3 logos are registered as trademarks of M3 Mobile.
- M3 SM30 is a registered trademark of M3 Mobile Co., Ltd.
- Google, Android, Google Play, YouTube, and other marks are trademarks of Google LLC.

Safety Rules

- Do not use the device while driving.
 - ✓ Traffic accidents may occur.
 - ✓ Observe the rules on device use while driving.
- Do not touch the power plug with wet hands.
 - ✓ You may be electrocuted.
- Be careful when using the battery.
 - ✓ Avoid causing a strong impact on the battery or breaking a hole through it with a sharp thing.
 - ✓ Do not put water on the battery or submerge it in water.
 - ✓ Do not let the charging terminal of the battery come into contact with a metal material.
- Keep the device, battery, or charger away from direct heat sources.
 - ✓ Heat may cause the device to become deformed, or an explosion or fire may occur.
 - ✓ If the device is placed inside a vehicle, the battery may explode due to increase in temperature.
- Do not use the device when there is thunder or lightning.
 - ✓ Lightning or fire may cause the device to break down or you may be electrocuted.
- Turn off power of the device when device use is prohibited.
 - ✓ Hazardous or wave-related problem may occur.
 - ✓ Turn off power of the device when you board a plane. The electromagnetic waves generated from the device may affect the plane's electronic equipment.
 - ✓ Turn off power of the device when you are in a hospital. Observe the device rules while in a hospital. The electromagnetic waves generated from the device may affect the medical equipment in the hospital.
- Turn off power of the device in hazardous areas where explosions may occur.
 - ✓ Observe the regulations, instructions, or signs of a hazardous area where explosions may occur.
 - ✓ Turn off power of the device while refueling.
- Be careful when a headset is used.
 - ✓ Avoid long-term exposure to loud sounds to prevent damage to your hearing.
 - ✓ Loud sounds while walking or driving distract your attention and may cause traffic accidents.

Table of Contents

Contents

Contents.....	5
1 Getting Started.....	8
1.1 Package Contents.....	8
1.2 Battery.....	8
2.2.1 Installation and Removal.....	8
2.2.2 Charging the Battery.....	10
2.3.1 Powering On.....	12
2.3.2 Powering Off.....	12
2.3.3 Standby Mode.....	13
1.3 Memory Card.....	14
2.4.1 Inserting an External Memory Card.....	14
2.4.2 Checking the Card.....	15
1.4 SIM Card.....	16
2.5.1 Inserting a SIM Card.....	16
2 Basic Use.....	17
2.1 Features.....	17
2.2 Buttons.....	17
2.3 Home Screen.....	18
3.3.1 Status Bar.....	18
3.3.2 Notification Bar.....	19
3.3.3 Home Screen.....	20

3.3.4	Dock.....	21
2.4	Virtual Keyboard.....	21
2.5	Device Reset	22
3.5.1	Soft Reset (1).....	22
3.5.2	Soft Reset (2).....	22
3.5.3	Factory Reset.....	22
2.6	Connecting with a PC.....	25
3	Home Screen Apps.....	26
3.1	Phone Calls.....	26
3.2	Wi-Fi.....	27
3.3	Scanner.....	29
4.3.1	Using the ScanEmul app.....	29
4.3.2	Using the Scanner	30
3.4	Bluetooth	31
4.4.1	Setting Up Bluetooth	31
4.4.2	Connecting Using Bluetooth	32
3.5	NFC	33
4.5.1	Setting Up NFC.....	33
4.5.2	Connecting Using NFC	34
4	Advanced Use.....	35
4.1	OS Update.....	35
	Key Customization.....	37
4.2	Battery Hot Swap	38
4.3	Fast Charging.....	38
4.4	Touch Sensitivity.....	39
5	Other.....	40
5.1	SM30 Series Device Specifications	40

5.2	Service	42
5.3	Contacts.....	42

1 Getting Started

1.1 Package Contents

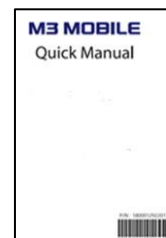
The **M3 SM30** package includes the following items:



M3 SM30



Battery



Quick Manual

If one or more of the above items are damaged or missing after opening the package, contact the store where you purchased the device.

* NOTE

Cradles and other accessories for the SM30 are sold separately. Cradles provide different functions depending on the available options. Please refer to the SM30 Accessory Guide.



If the device is used for purposes other than its intended use or has been modified, it may emit electromagnetic radiation.

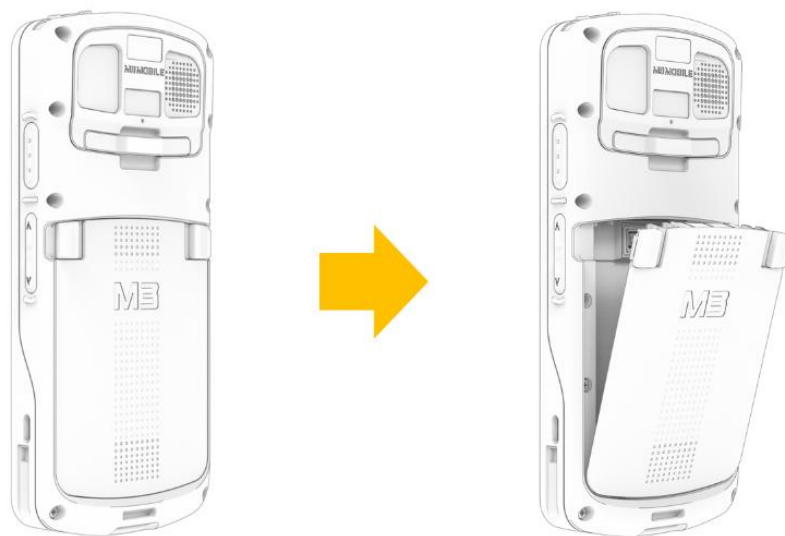
1.2 Battery



2.2.1 Installation and Removal

Inserting the Battery

Slide in the bottom end of the battery first.

Push down on the top end until the left and right release buttons lock.



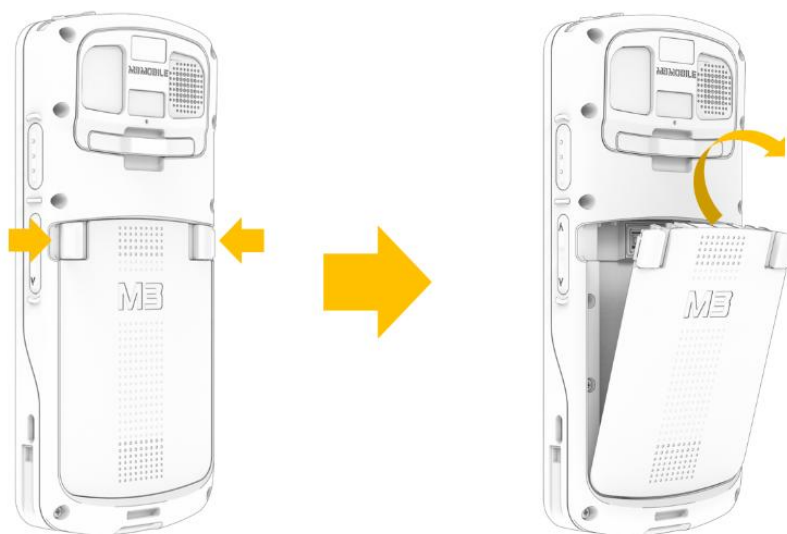
The M3 SM30 can use 3.8V  5,000mAh and 3.8V  7,000Ah Li-ion batteries.



Do not use an unapproved battery. The device may cause it to explode.
Follow proper disposal procedures when discarding batteries.

Removing the Battery

Press both release buttons to remove the battery.





Before removing the battery, close any running programs. Failing to close a program may cause errors the next time it starts.

If the battery is not properly removed, the battery terminal may be damaged.



The M3 SM30 can be used continuously for 12 to 24 hours on a single charge.

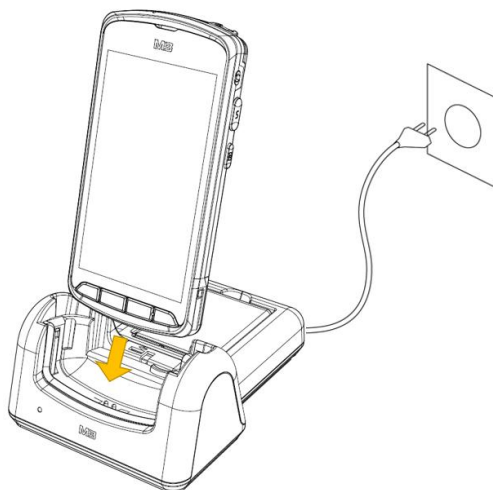
(The exact duration depends on the specific usage environment.)


2.2.2 Charging the Battery

A warning screen indicates when the battery's charge is low.

If the battery's charge runs out, the device will power off.

- 1) The battery can be charged directly by connecting a power adapter to the device's USB-C port.
- 2) Connect the device to a cradle that you can additionally purchase to charge the battery.
As pictured below, place the device into the cradle to begin charging.



The AC adaptor can support 100–240V input, 5V  5A output. Any voltage beyond this range may seriously damage the device.

LED Color	Description
Red	The battery is charging.
Green	The battery is fully charged.

A discharged battery can reach a full charge in 4 hours.



The battery is suited for temperatures between -20°C (-4°F) and 60°C (140°F).

Temperatures outside this range may cause the device to malfunction or break down.



3) It is recommended to replace the battery every two years.

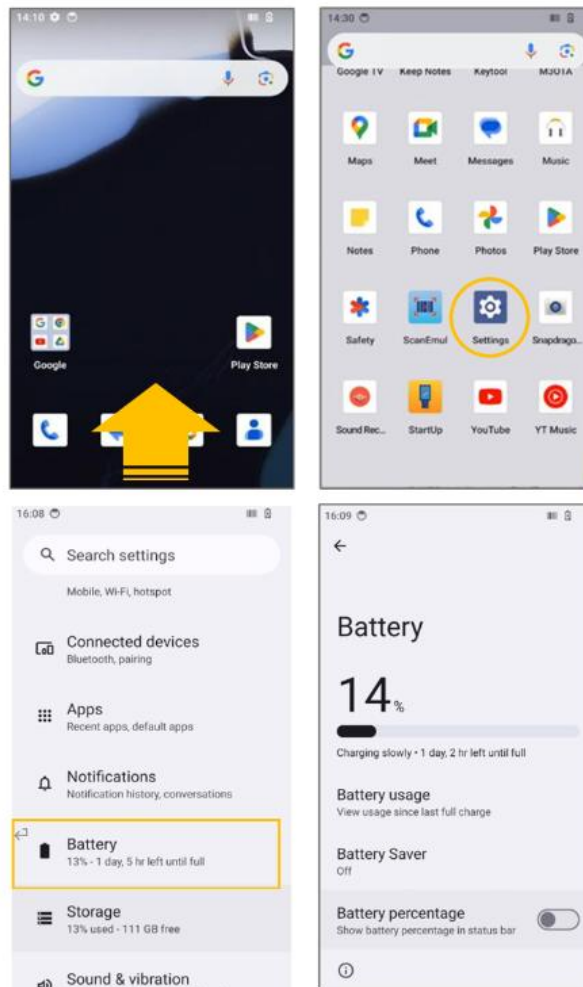
4) Keeping the battery continuously plugged in and charged will decrease its lifespan.

To view more information on the device battery: **[swipe up on the Home Screen → scroll down to**

the Settings icon



→ scroll down to Battery].



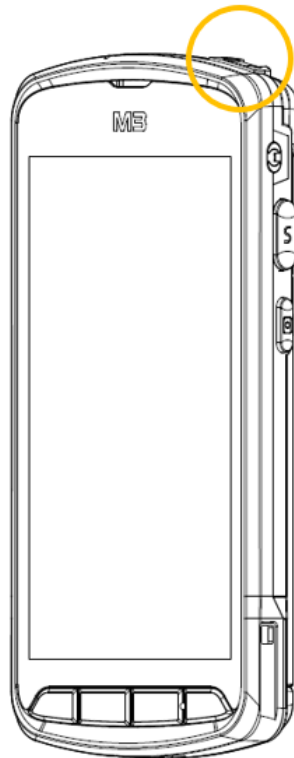
Turning the Device On/Off

2.3.1 Powering On

Press and hold the Power button until the device vibrates. This will turn the device on and display the device lock screen.



If the battery is completely discharged, the device may not turn on properly. In this situation, charge the battery before turning on the device again.



2.3.2 Powering Off

Press and hold the Power button until the Power menu appears, then press the Power off button.



If the device becomes unresponsive, press and hold the Power button for 10 seconds to force the device to power off.

2.3.3 Standby Mode

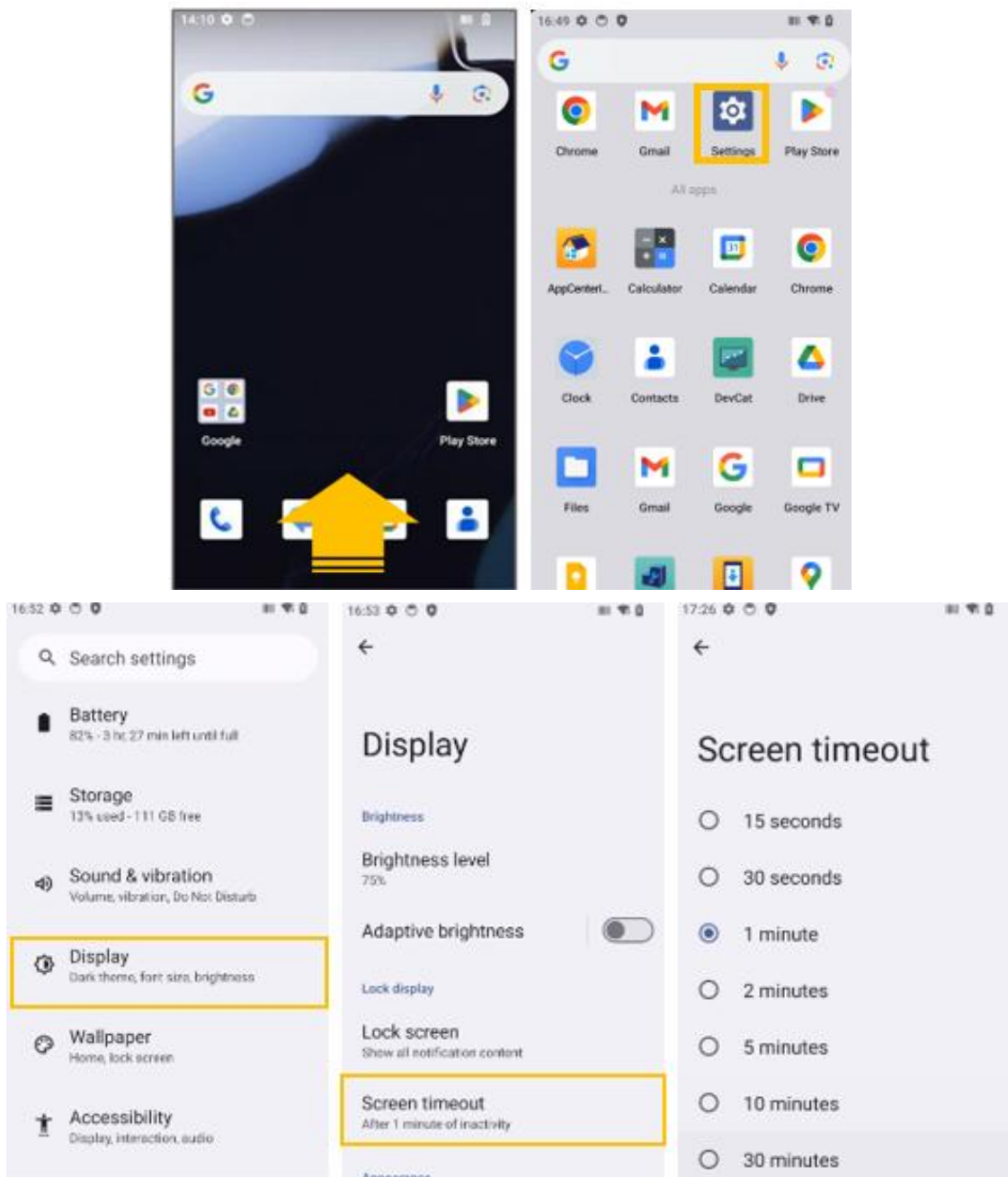
If the device is not used for a prolonged amount of time, it will automatically enter standby mode to limit battery consumption. To manually enter standby mode, briefly press the Power button.

The screen timeout duration when the device enters standby mode is after one minute. This length can be changed in the device settings.

To change the screen timeout duration: **[swipe up on the Home Screen → press the Settings icon**



→ scroll down to Display → scroll down to Screen timeout].



1.3 Memory Card

2.4.1 Inserting an External Memory Card

The M3 SM30 supports microSD cards for additional storage.



To insert a microSD card, first remove the battery, then slide the card up into the microSD card slot.



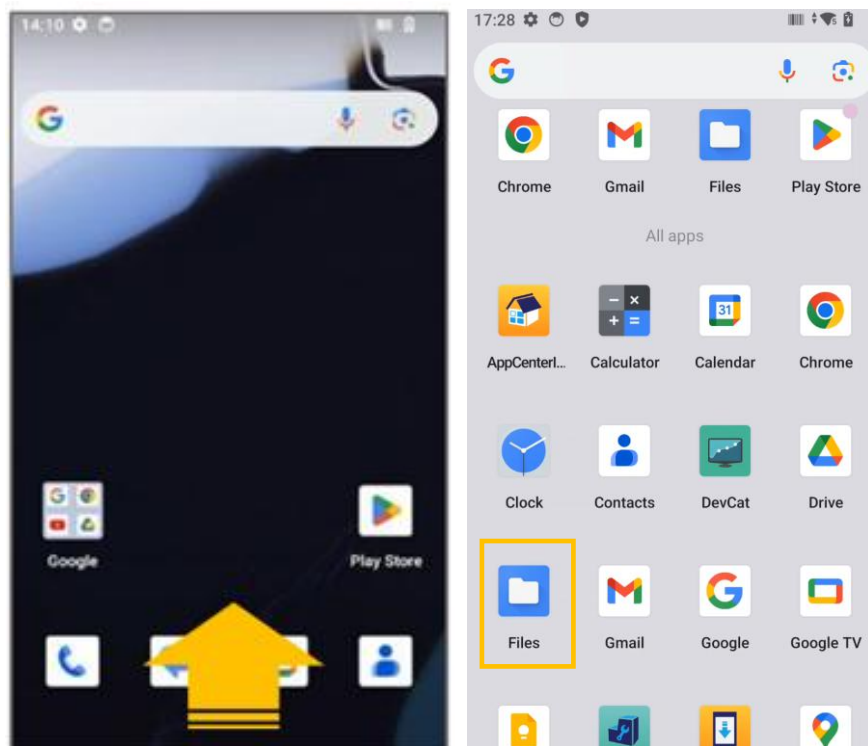
Android 14, the default OS in the M3 SM30, can support up to 2TB of external memory.

2.4.2 Checking the Card

To view the contents of the microSD card: [swipe up on the Home Screen → press the Files icon



→ press the Menu button at the top left of the screen → select the name of the microSD card].



1.4 SIM Card

2.5.1 Inserting a SIM Card

The M3 SM30 supports SIM cards for voice calls and data transfers over a mobile network. Only SIM cards from local network providers are supported.



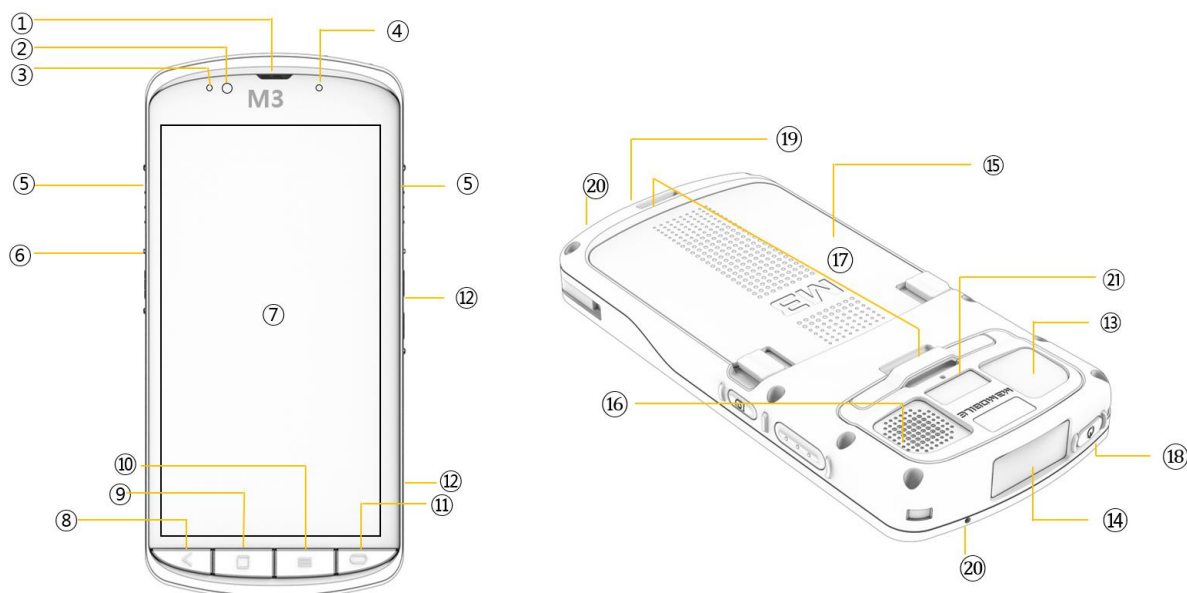
To insert a SIM card, first remove the battery, then slide the card up into the SIM card slot.

For more information on phone functionality, see the [Phone Function](#) section.

2 Basic Use

2.1 Features

Device Layout



- ① Receiver
- ② Front Camera
- ③ Sensor
- ④ Charging LED
- ⑤ Scanner Button
- ⑥ Camera Button
- ⑦ Screen

- ⑧ Back Button
- ⑨ Home Button
- ⑩ Menu Button
- ⑪ Function Button
- ⑫ Volume Buttons
- ⑬ Rear Camera
- ⑭ Scan Window

- ⑮ Battery
- ⑯ Speaker
- ⑰ Strap Holder
- ⑱ Power Button
- ⑲ Charging Contacts / 2Pin
- ⑳ Microphone
- ㉑ 8 Pin

2.2 Buttons

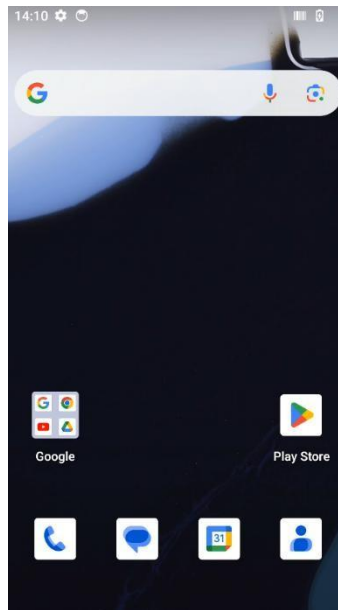
Button	Description
Scanner	Operate scanner while executing scanner program
Function	Perform the task set to the button
Volume	Increase or decrease volume
Menu	Display menu

Back	Return to the previous screen
Camera	Press once to launch the camera program, press again to take a photo
Power	Press to turn the screen on or off, hold to power on or off

2.3 Home Screen

The Home Screen is comprised of the following components:

Notification Bar



Status Bar

Search Bar

Home Screen

Home Screen Apps

Dock

3.3.1 Status Bar

The Status Bar may display the following indicators:

Icon	Icon Name	Description
	Battery	Battery charging / remaining battery charge
	Phone	Cellular signal strength / no connection
	Sound / Vibration	Sound / vibration status
	Wi-Fi	Wi-Fi signal strength / no connection
	Bluetooth	Bluetooth enabled / disabled
	GPS	Searching for location data
	Alarm	Alarm has been set



Airplane Mode

Airplane Mode enabled



NO SIM

No SIM card detected

3.3.2 Notification Bar

The Notification Bar may display the following device notifications:

Icon	Icon Name	Description
	More	More notifications are available
	Data Sync	Data is being synchronized
	Schedule	Scheduled event reminder
	Wi-Fi	A Wi-Fi network is available
	Music	Playing music
	Data Sync	Data could not be synchronized
	Data Upload	Data is uploading
	Data Download	Data is downloading
	SD Card Full	SD card is at full capacity
	USB	The device is connected via USB
	Debugging	USB debugging is available
	Received Message	There is a new message
	Missed Call	There was a missed call
	Wi-Fi Hotspot	Wi-Fi hotspot is active
	USB Tethering	USB tethering is active
	Bluetooth tethering	Bluetooth tethering is active



Virtual Private Network
(VPN)

Device is connected to a VPN

3.3.3 Home Screen

Various apps can be launched by pressing their shortcut icons on the Home Screen. Shortcut icons can be freely added or deleted from the Home Screen. The following is a list of common apps:

Icon	Icon Name	Description
	Google	Find what you need, explore your interests, and get a feed of stories and updates on topics that matter to you.
	Gmail	Get your messages instantly via push notifications, read and respond online & offline, find any message quickly and lots more.
	Google Chrome	Browse fast on a device with the same Chrome browser you love on your desktop. Pick up where you left off on your other devices with tab sync, search by voice, and save up to 60% of data usage while browsing.
	Google Maps	Explore and navigate your world with Google Maps. Find places you'll love, connect with businesses you're interested in, and get around with real-time traffic information.
	YouTube	See what the world is watching in music, gaming, entertainment, news and more. Subscribe to channels, share videos with friends, edit and upload videos, and watch on any device.
	Google Drive	Google Drive is a smart online storage and backup that puts all your files within reach from a device.
	YouTube Music	Easily find the albums, singles, live performances, covers and remixes you're looking for. Don't know a song's name? Just search the lyrics or describe it.
	Google Play Movies & TV	Buy or rent the newest movies and shows way before they hit DVD — plus all your old favorites, too.
	Google Play Music	Music makes it easy to find the right music, right now. Listen to millions of songs for any mood or situation, with recommendations from Google to help you navigate them.



Google Duo

Use to make a simple video call with the high-quality.



Google Photos

Automatically organized and searchable by the people, places, and things in them, your photos and memories are always easy to find and share.



Google Play

Get your music, movies, TV, books, magazines, apps, and games all in one place.

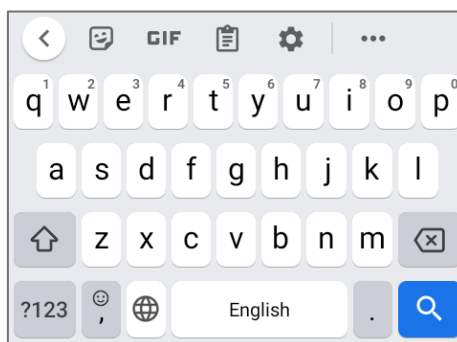
3.3.4 Dock

Shortcut icons can be placed on the lower section to rapidly execute frequently used programs. On the Dock Bar, up to five shortcut icons may be added or deleted.

Icon	Icon Name	Description
	Phone	Make and receive calls
	Calendar	Manage schedules and set alerts
	Contacts	Manage contact information
	Message	Write and check text messages
	Camera	Take photos or record videos

2.4 Virtual Keyboard

Press a field that accepts text input (such as a search bar) to display the virtual keyboard.

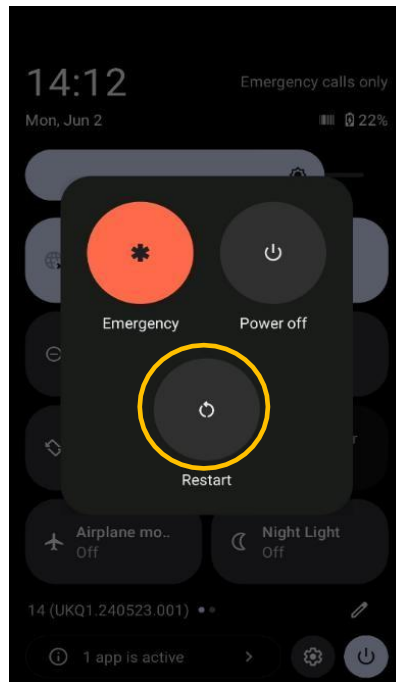


If the virtual keyboard does not appear after pressing a text field, press the keyboard icon in the lower right corner of the screen and enable **[Show virtual keyboard]**.

2.5 Device Reset

3.5.1 Soft Reset (1)

Press and hold the Power button to display the Power menu, then select **[Restart]**.




3.5.2 Soft Reset (2)

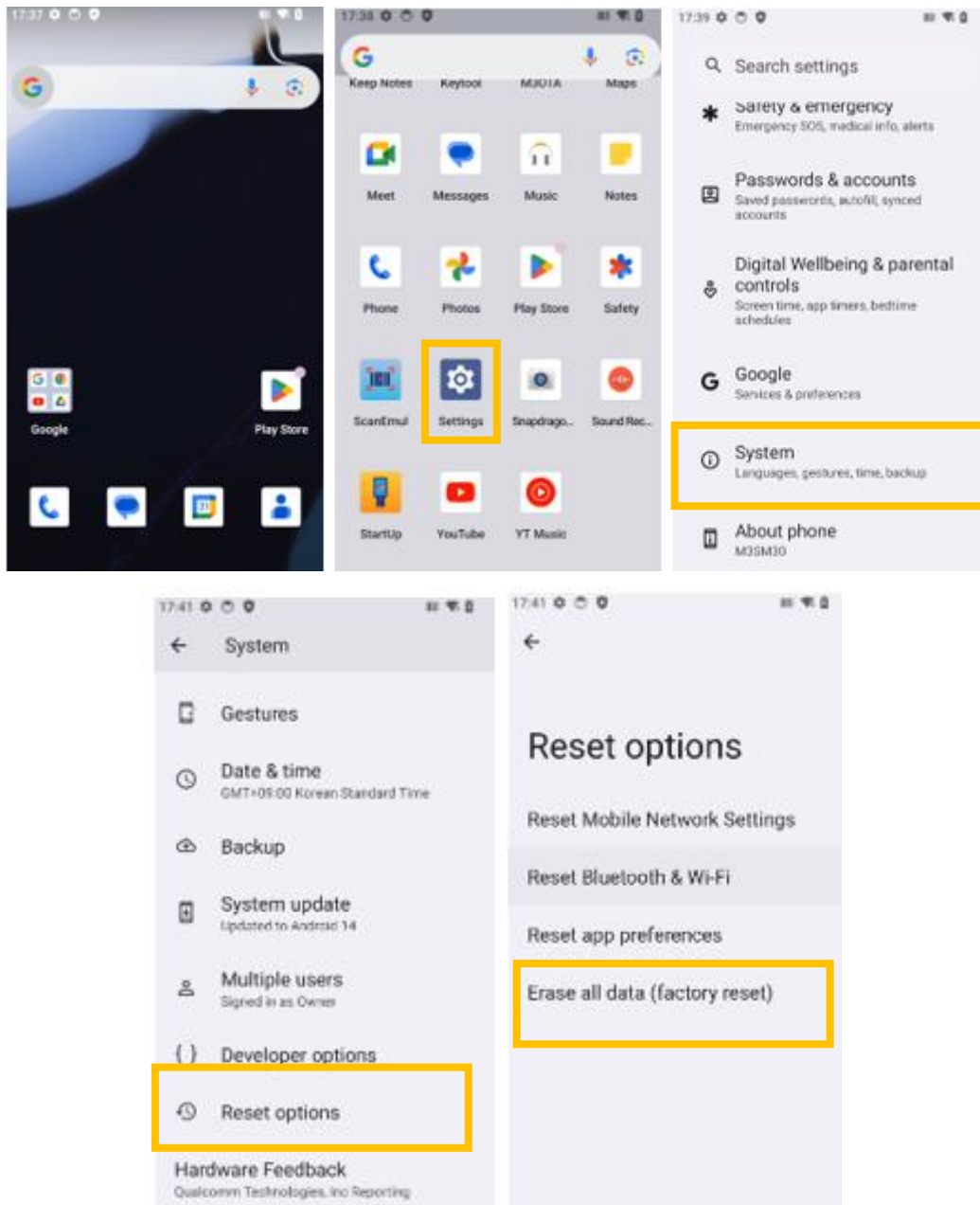
Press and hold the Power button for more than 10 seconds.

Any open programs will be closed and unsaved data will be lost. However, internal storage data will not be affected.

3.5.3 Factory Reset

If a serious problem occurs that cannot be solved with a soft reset, take the following steps to perform a factory reset:

[Swipe up on the Home Screen → press the Settings icon  → scroll down to System → scroll down to Reset options → select Erase all data (factory reset)].



- Check if Erase internal SD card is checked. → Reset device. → Erase everything
- According to options, documents in internal SD card or microSD card may be deleted. As such, please check the options. All settings will be reset.

Factory Reset Protection (FRP) Feature

What is Device Protection, or Factory Reset Protection (FRP)?

Android devices provide built-in security features you can use to protect your device and information, including screen locks and data encryption. Data protection, or Factory Reset Protection (FRP), is a security feature on Android devices with Lollipop 5.1 or higher.

FRP is automatically activated when you set up a Google Account on your device. Once FRP is activated, it prevents the use of a device after a factory data reset until you log-in with the Google username and password previously set up on the device.

How does FRP work?

When you perform a Factory Data Reset, all settings are returned to the factory default settings. All data is erased, including files and downloaded apps.

If a Google Account was set up on the device, FRP is enabled. This means that after reset, you'll be required to log-in to the same Google Account again. If you have multiple Google Accounts set up on the device, you can log in using any of the accounts.

If an unauthorized person managed to reset the device, they would still have to log in using the previous Google username and password. This means that lost or stolen devices are inaccessible without an associated Google account.

What do I need to know about FRP?

If you want to reset your device to the factory settings, you need to log in with the same Google username and password after the reset is completed.

If you want to reset your device to the factory settings but don't remember your Google username and/or password, try the following:

- Go to your account settings to check your account name and reset your password via the device or at <https://www.google.com>. It can take up to 24 hours for the password reset to sync across all registered devices.
- Unlink the account from the device before performing a factory reset.

If you already reset the device but don't remember your Google username and/or password, try the following:

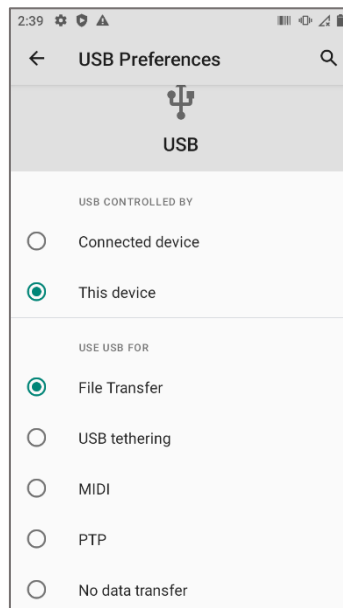
- If you know your Google username but don't remember the password, you can reset your password via the device or at www.google.com. It can take up to 24 hours for the password reset to sync across all registered devices. After 24 hours, you can try to log in with the new password.
- If you have multiple Google Accounts and you can't remember which account is linked to the device, visit <https://www.google.com/android/devicemanager>. Log in with your Google username and password and check the list of devices registered with the account. If you don't see the device listed on the account, try a different Google Account. When you find the account registered with the device, log in to the device with that account.

If you can't remember any of your Google Account information, you can send your device, along with proof of purchase, to an authorized M3 Mobile supplier. M3 has special tools to reset the device to factory settings with no protection enabled.

2.6 Connecting with a PC

To connect the device to a PC, perform the following steps:

1. Connect the device to a PC via cable or USB. The following screen will appear:



- Charge this device – Data cannot be transferred while the device is charging.
 - File Transfer – Send files between devices.
 - MIDI – Use as a musical instruments app.
 - PTP – Send photos between devices.
2. The PC will recognize the device and automatically install the relevant driver.
 3. Once the driver is installed, files can be transferred through the file explorer.




If there is an issue connecting the device with a PC, try the following:

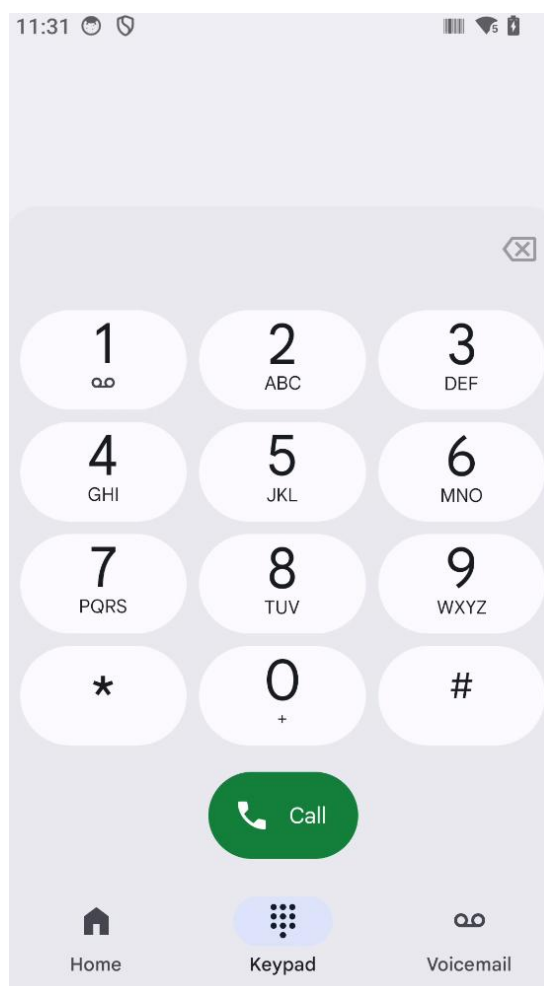
- Check if the USB cable is properly connected on both ends.
- Make sure the LCD screen of the device is turned on.

3 Home Screen Apps

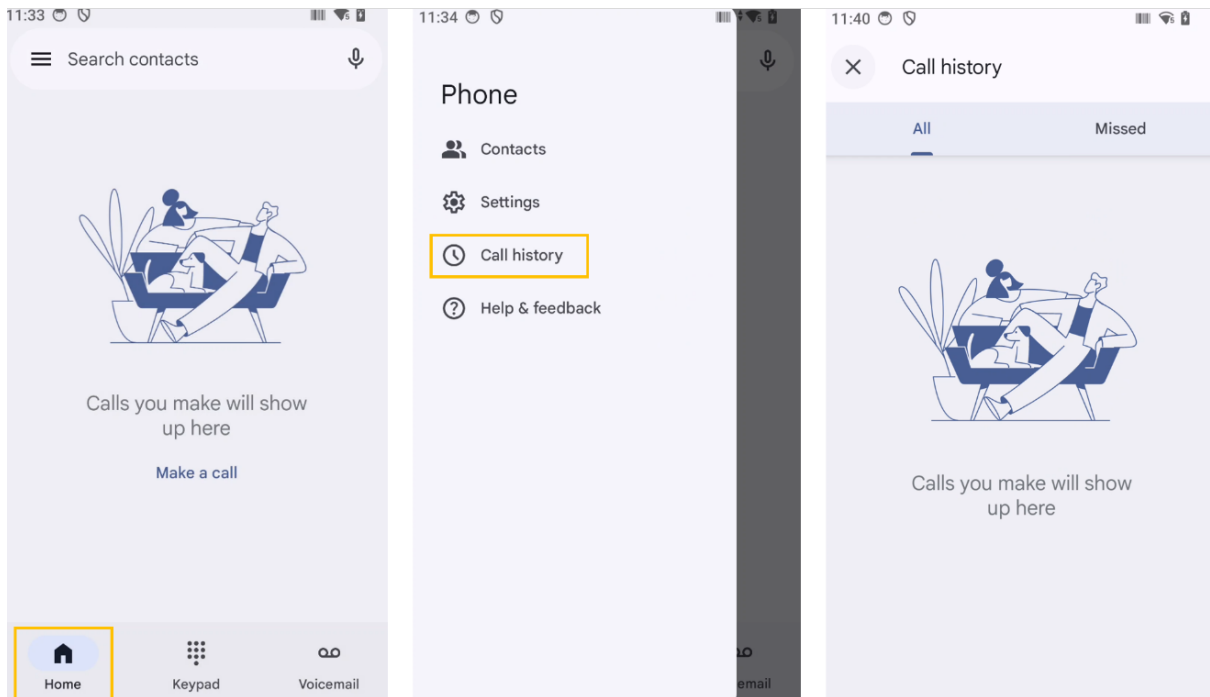
3.1 Phone Calls

The M3 SM30 supports the 2G (GSM), 3G (UMTS, HSPA+), 4G (LTE) and 5G(New Radio) networks.

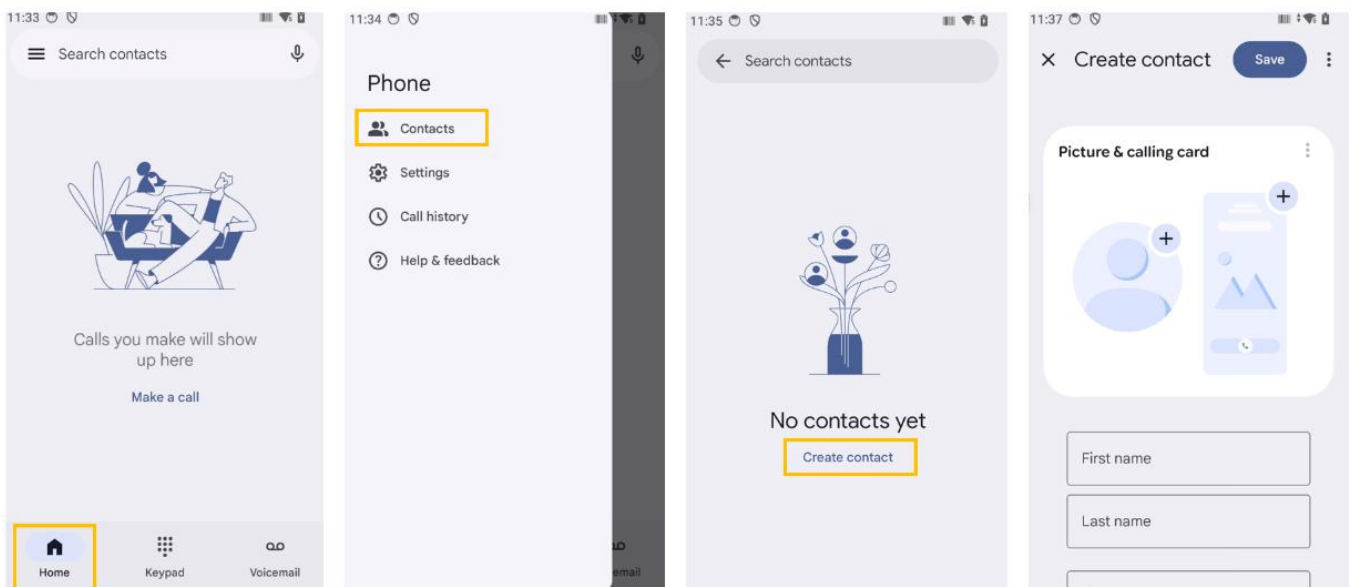
Press the  icon to open the Phone menu.

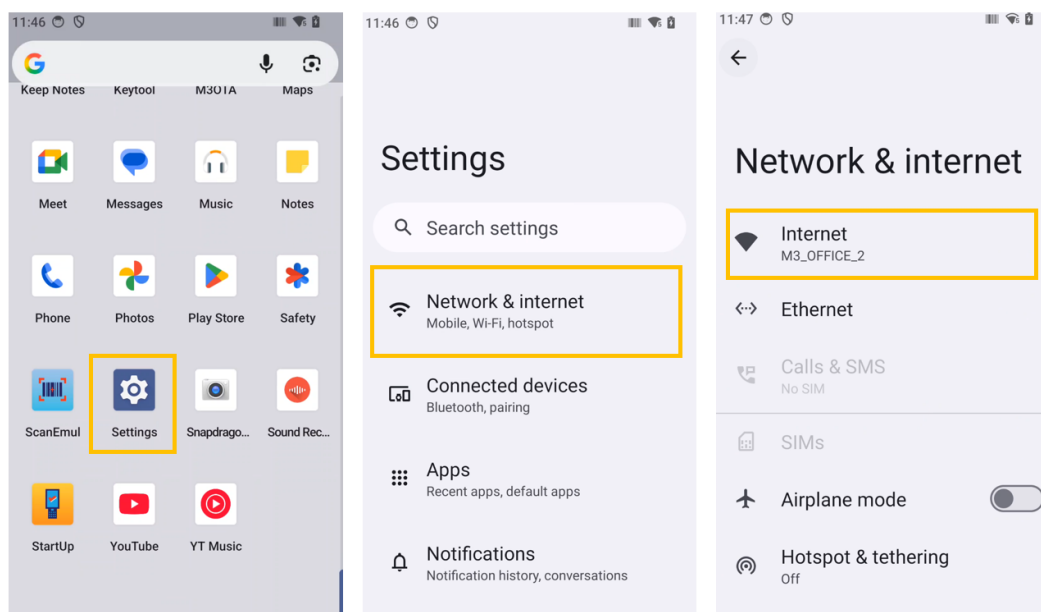


- Press the (🕒) icon to see all recent call history.




- Press the (👤) icon to see the list of contacts.
- Press **[Create new contact]** to add a contact.

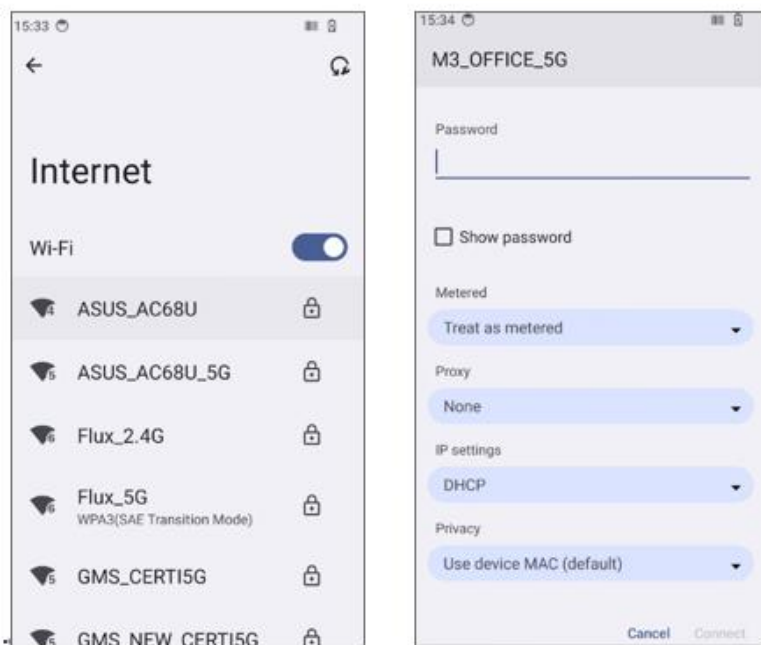




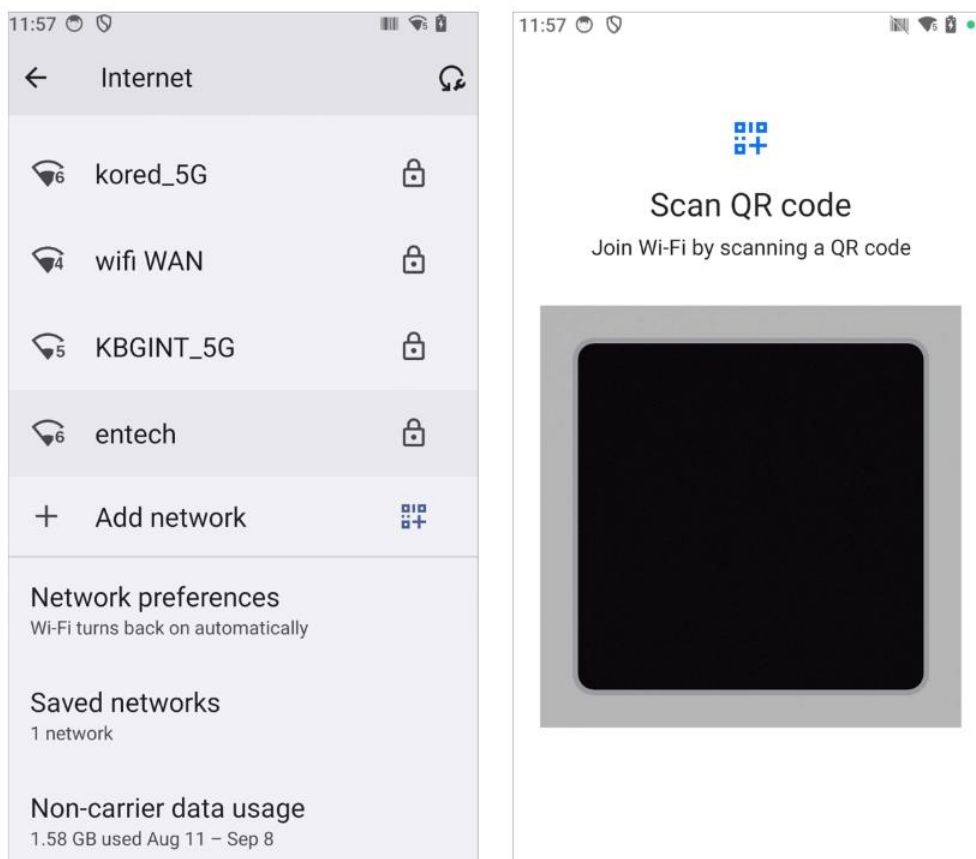
Connecting to a Wi-Fi network

To connect to an AP, perform the following procedure:

1. Select “Wi-Fi” menu of the  Settings icon.
2. the list, select an AP name to access. If necessary, enter password to complete the access.




3. You can also create a QR code to share your network and connect other devices through the shared QR code without entering your Wi-Fi password.



3.3 Scanner

The M3 SM30 supports 1D and 2D scanning, as well as Smart Focus scanning. For detailed information, contact your local distributor or refer to the M3 website (<http://www.m3mobile.net>).

4.3.1 Using the ScanEmul app

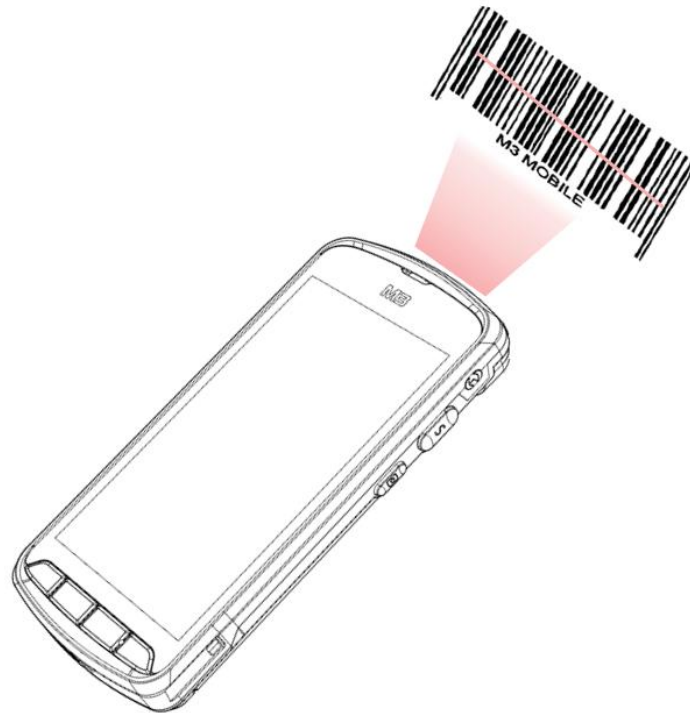
The scanner can be used with the ScanEmul app , M3 Mobile's proprietary keyboard wedge utility and scanning interface. It processes 1D and 2D scanned data and displays it as information.



In the case of 2D scanning, it cannot be simultaneously used with a camera.

4.3.2 Using the Scanner

Aim the front of the device at a barcode and press one of the scan buttons.



The scanner's laser beam should completely cover barcode, as shown below:



O

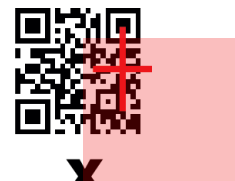


X

<1D Scanner>



O



X

<2D Scanner>




- 1) not look directly into the laser emitter.
(CLASS 2 LASER PRODUCT 1.0 mW, MAX OUTPUT: 650 nm)
- 2) the device is used for purposes other than those described in this manual,
there is a risk of exposure o harmful electromagnetic radiation.


3.4 Bluetooth

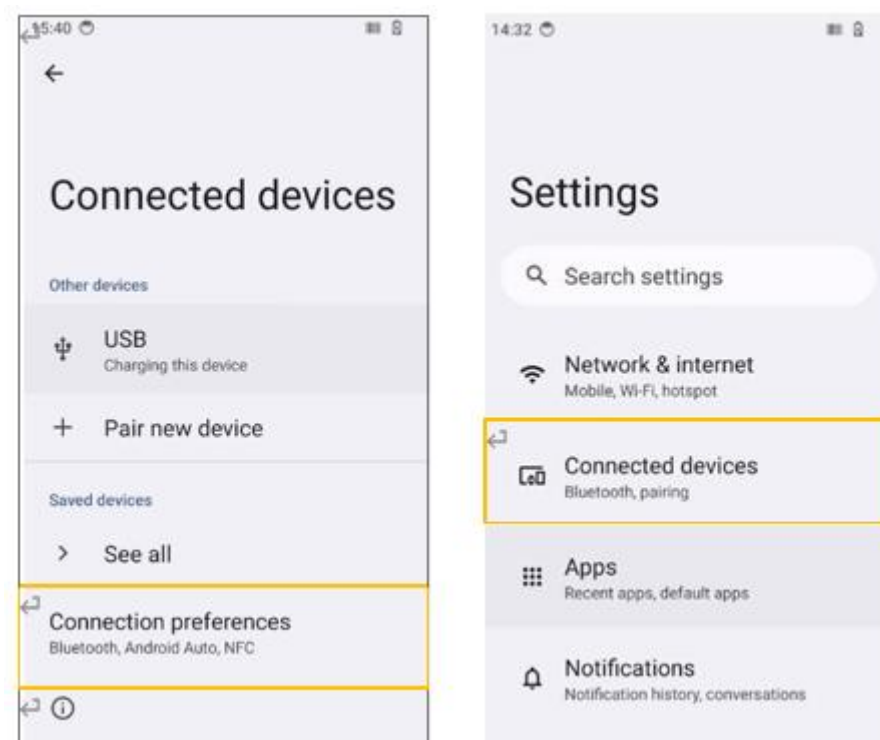
4.4.1 Setting Up Bluetooth

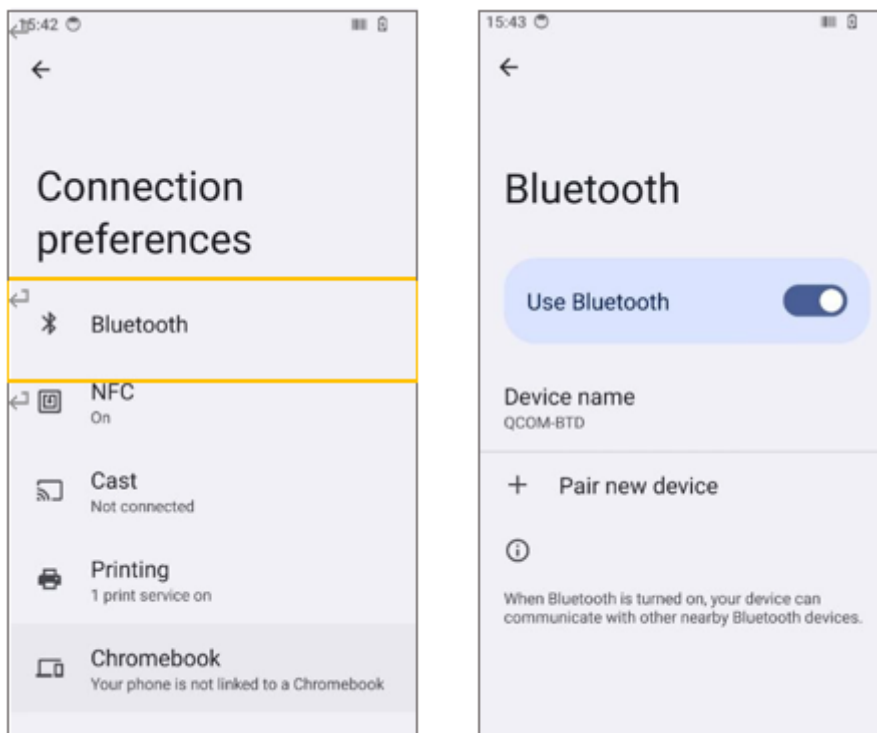
Frequently paired Bluetooth devices can be registered on the M3 SM30, or make the M3 SM30 discoverable by other devices.

How to enable Bluetooth:

[Swipe up on the Home Screen → press the Settings icon  → go to Connected devices → go to Connection preferences → go to Bluetooth → enable Use Bluetooth → + Pair new device (a list of available devices will be displayed)].

If Bluetooth signal is turned on, Bluetooth icon () is displayed in the Status bar indicating that the Bluetooth feature is activated.

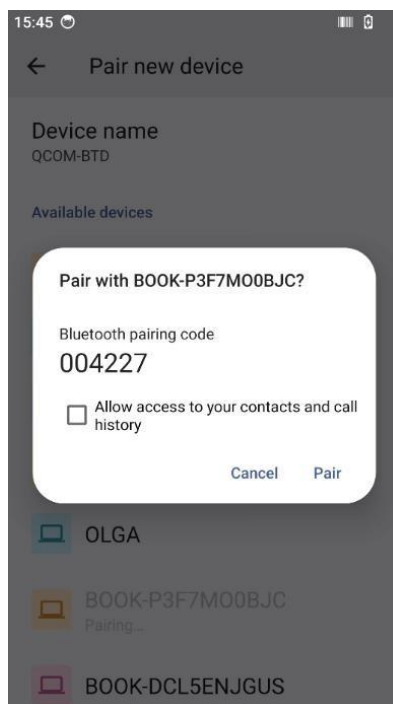




4.4.2 Connecting Using Bluetooth

On the **[+ Pair new device]** screen, a list of available devices will be displayed.

When another device attempts to connect to the M3 SM30 via Bluetooth, the **[Bluetooth pairing request]** pop-up will appear. Enter the Bluetooth pairing code from the other device to pair.



Guidelines on maintaining distance between device and user

- This device was tested under normal usage conditions while maintaining a **0.5 cm distance** between the user and the device.
- To comply with the **radiation safety standards set by the Ministry of Science and ICT**, the device and its antenna must be kept **at least 0.5 cm away from the user's body**, regardless of whether the antenna is in use.
- **Avoid using third-party belt clips, cases, or similar accessories.**
- If accessories are used, ensure that the **back of the device remains at least 0.5 cm away from the user's body.**


3.5 NFC

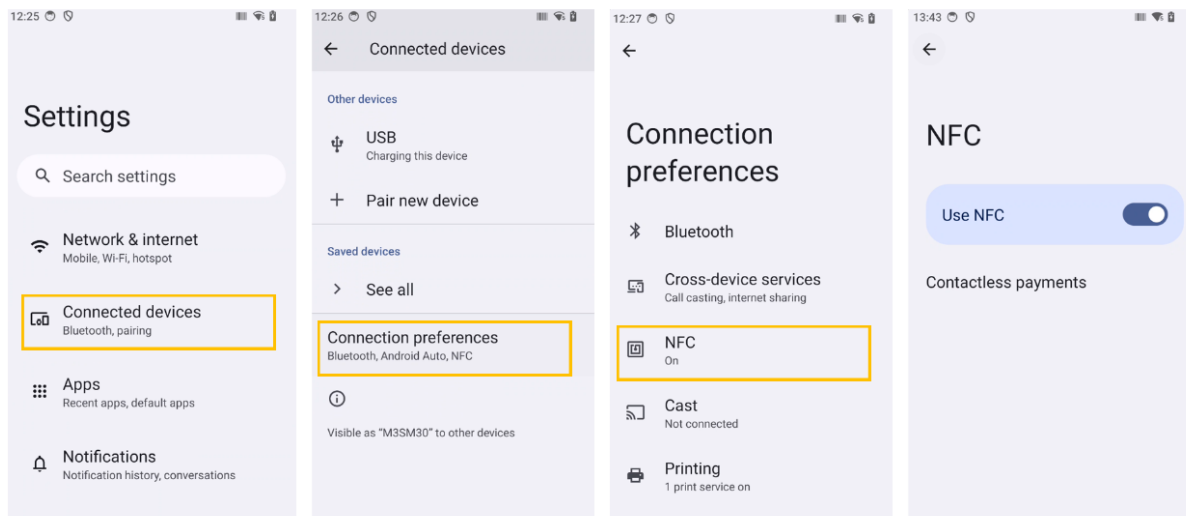
4.5.1 Setting Up NFC

Enabling NFC

The NFC antenna is located on the upper rear side of the SM30 device, so when tagging, place the device close to that area for proper alignment.

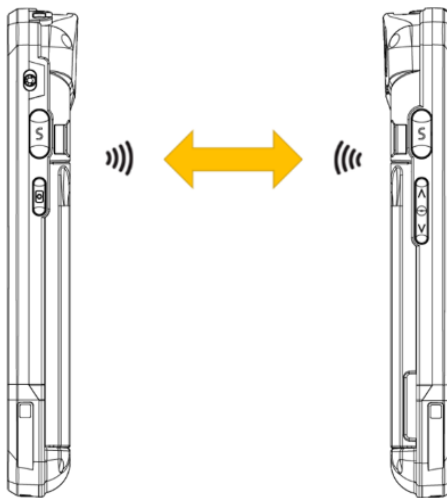


[Swipe up on the Home Screen → press the Settings icon  → go to Connected devices → go to Connection preferences → go to NFC → enable Use NFC].



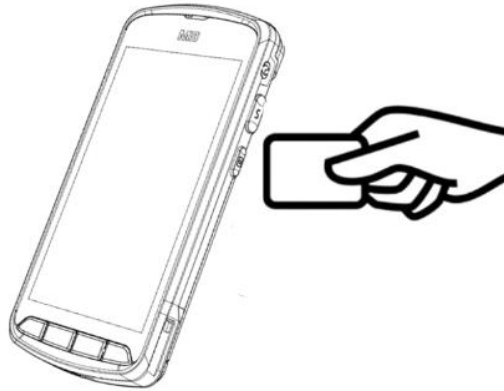
4.5.2 Connecting Using NFC

- Open a webpage or screen of a video, photo, or contact.
- Place the back part of the NFC device against the back of the M3 SM30.
- Touch the screen. Data transfer will start.



To share data via NFC, the distance between the devices should be less than 5cm.

To transfer data between devices, the recommended distance between devices is within 10m.




Connecting to a Bluetooth Device Using NFC

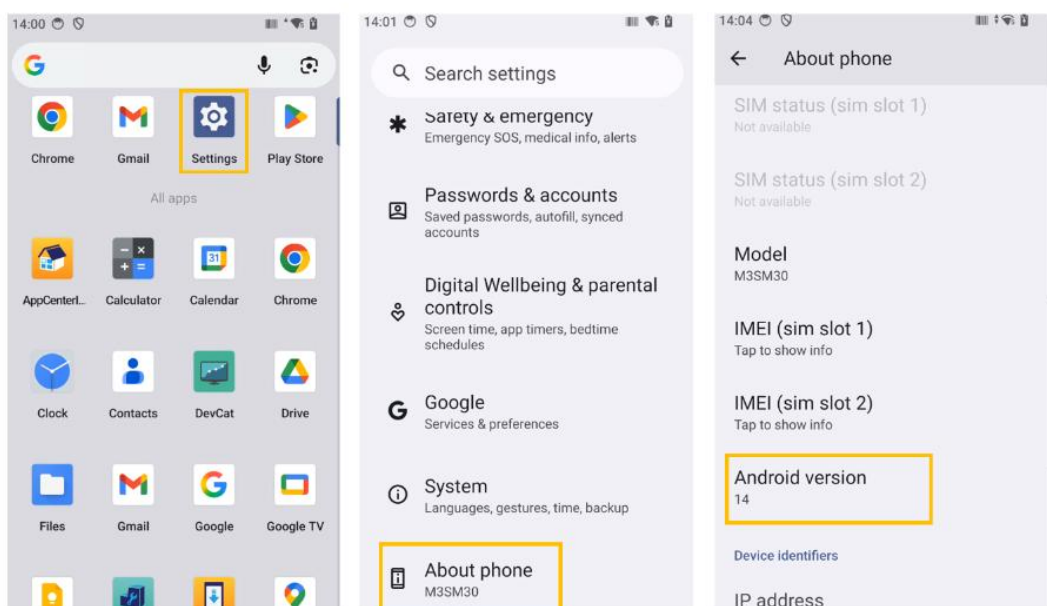
1. Hold the M3 SM30 as shown below. Do not obstruct or cover the antenna area.
2. Place the M3 SM30 near the device. The device displays that connection is successfully performed.

4 Advanced Use

4.1 OS Update

M3 Mobile provides OS updates to devices to improve quality and performance. To check the OS version installed on the device:

[Swipe up on the Home Screen → press the Settings icon  → scroll down to About phone → scroll down to Android version].



Details on the latest OS are provided on [M3 Mobile's online support page](#).

The device OS can be updated through two methods:

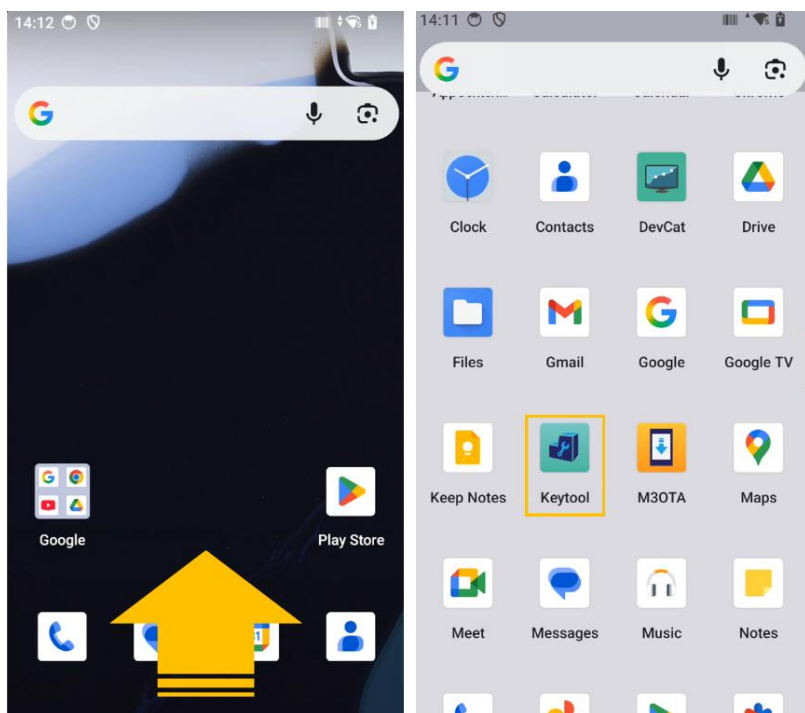
- microSD card
- ethernet cradle

For detailed information on OS updates, refer to the M3 FAQ (FAQ [download](#)).

Key Customization

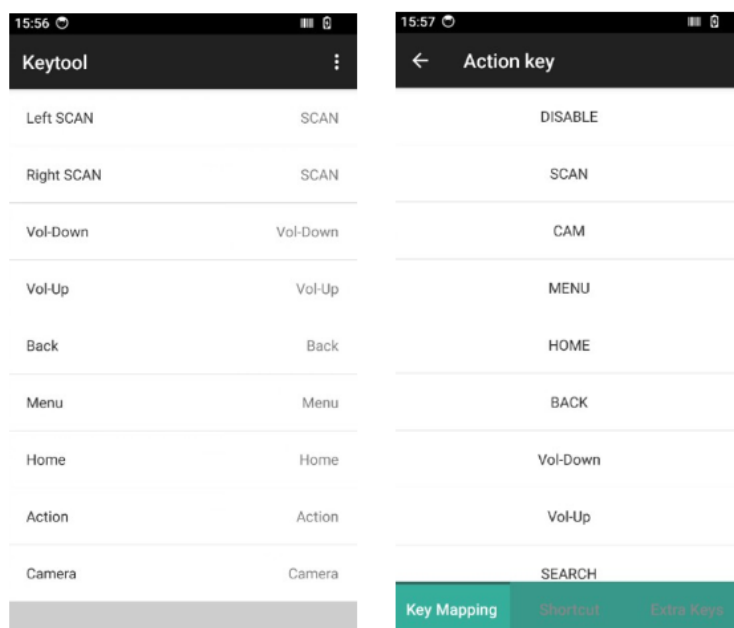
The M3 SM30 allows for convenient key customization.

[Swipe up on the Home Screen → press the Keytool icon



The following list of keys can be freely customized:

Any physical button on the device can be assigned a new function (except the Power button).



4.2 Battery Hot Swap

The SM30 Series provide a Hot Swap mode where you can replace the battery without powering off the device. When you remove the battery, the display turns off and the device enters the Hot Swap mode. The device enters a critical suspend mode with RAM data persistence for approximately 5 minutes. In the critical suspend mode, WLAN and Bluetooth radios are disabled and will only resume if you insert a battery with sufficient charge into the device.

Sometimes people want to swap the battery without rebooting a device. Because

- 1) Not saved application data is erased when device is rebooted.
- 2) Rebooting Time is too long.

Battery Hot swap function prevents this situation. SL25 can replace battery without any action

- 1) Just remove battery then device goes on sleep mode(Not a Power OFF)
- 2) Inset new battery
- 3) Wake up using power button

4.3 Fast Charging

The M3 SM30 battery allows for fast charging.

The reduces the charging time by 30 minutes compared to regular charging.

By using a PCM (Protection Circuit Module) in each cell, higher current flow shortens charging times and eliminates risk of battery explosion due to overcurrent.



Only use a 5V/5A power adapter for charging.

Only use accessories that are compatible with the M3 SM30 series.


4.4 Touch Sensitivity

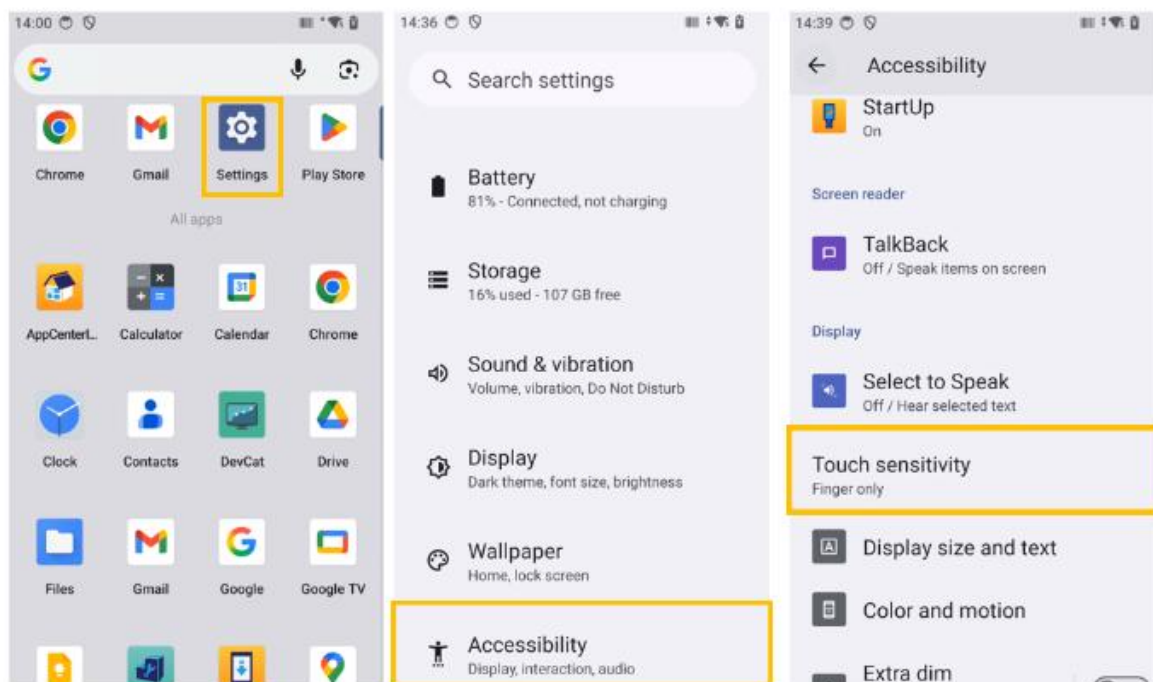
This function is designed to enable users to use the touch screen in different environments. There are three modes:

- Finger only
- Glove & Finger
- Stylus & Finger

Normal is a general environment that enables touch with finger and stylus pen, Glove increases sensitivity of touch and allows touch to be made while wearing gloves. Both are supported regardless of screen protector.

To adjust the Touch sensitivity mode:

[Swipe up on the Home Screen → press the Settings icon  → scroll down to Accessibility → scroll down to Touch sensitivity].



5 Other

5.1 SM30 Series Device Specifications

Physical Characteristics	SM30X	SM30W
Dimensions	78.5 × 161.64 × 17.5mm	
Weight	297g	
Display	5.7 inch FHD (1920 × 1080)	
Touch panel	Corning® Gorilla® 5 Glass touch panel with air gap; supports dual input mode with finger, gloved finger and stylus (conductive stylus sold separately)	
Backlight	LED backlight display	
Expansion Slot	User accessible microSD supports up to 2TB	
SIM Slots	Dual SIM : 1 nano-SIM and 1 eSIM	-
Connections	USB 3.1 High Speed OTG (host/client); USB-C Connector	
Notification	Audible tone, multi-color LEDs, vibration	
Keypad	Side: Volume + / -, Camera, Scanner Left, Scanner Right (all customizable) Bottom: Home, Back, Menu, Function (all customizable) Top: Power	
Voice	Internal speaker, Two microphone with noise cancellation; vibrate alert and Bluetooth wireless headset support; High quality speaker phone;	
Audio	Built-in speaker and microphone	
Performance Characteristics		
CPU	Qualcomm Dragonwing™ QCM6490 2.7 GHz Octa-core processor	
OS	Android 14 (up to Android 18) with M3 Mobile's StartUp for control over GMS and other services; will support future Android releases	
Memory	8GB/128GB	
Power	All models ship with rechargeable Li-Ion, 3.8V, 5,000mAh smart battery, hot swap support with temporary WWAN/ WLAN/Bluetooth session persistence, 7,000mAh extended batteries(optional)	
Data Capture		
Scanning	2D Imager (SE4770), Smart Focus(SE5500)	
Camera	Front CAM : 8M pixels, Rear CAM : 16 M pixels auto-focus (PDAF)	
NFC	ISO 14443 Type A and B; FeliCa and ISO 15693 cards; Card Emulation via Host	
Wireless WAN Data and Voice Communications (X model only)		
Radio Frequency Band	5G FR1: n1/2/3/5/7/8/20/28/38/40/41/66/71/77/78; 4G: B1/2/3/4/5/7/8/13/17/20/28/38/39/40/41/ 42/43/66/71; 3G: 1/2/4/5/8 2G: 850, 900, 1800, 1900	-
GPS	GPS, GLONASS, Galileo, Beidou, QZSS	-

	Dual-Band GNSS—concurrent L1/G1/E1/B1 (GPS/ QZSS, GLO, GAL, BeiDou) + L5/E5a/BDSB2a (GPS/ QZSS, GAL, BeiDou); a-GPS; supports XTRA	
Wireless LAN		
Radio	IEEE 802.11 a/b/g/n/ac/d/h/i/r/k/v/w/mc/ax; 2x2 MU-MIMO; Wi-Fi 6E (802.11ax); Dual Band Simultaneous; IPv4, IPv6	
Data Rates	5GHz: 802.11a/n/ac/ax — up to 433 Mbps 2.4GHz: 802.11b/g/n — up to 72 Mbps	
Operating Channels (depending on Regulatory)	Channel 1-13 (2412-2472 MHz): 1, 2, 3, 4, 5, 6, 7, 8, 9, 10, 11, 12, 13 Channel 36-165 (5180-5825 MHz): 36, 40, 44, 48, 52, 56, 60, 64, 100, 104, 108, 112, 116, 120, 124, 128, 132, 136, 140, 144, 149, 153, 157, 161, 165 Channel Bandwidth: 20, 40, 80 MHz Actual operating channels/ frequencies and bandwidths depend on regulatory rules and certification agency.	
Security and Encryption	WEP (40 or 104 bit); WPA/WPA2 Personal (TKIP, and AES); WPA3 Personal (SAE); WPA/WPA2 Enterprise (TKIP and AES); WPA3 Enterprise (AES) — EAP-TTLS (PAP, MSCHAP, MSCHAPv2), EAP-TLS, PEAPv0-MSCHAPv2, PEAPv1-EAP-GTC, LEAP and EAP-PWD; WPA3 Enterprise 192-bit Mode (GCMP256) — EAP-TLS; Enhanced Open (OWE)	
Fast Roam	PMKID caching; Cisco CCKM; 802.11r; OKC	
Wireless PAN		
Bluetooth	Bluetooth 5.3 BLE, Class 2 BLE for beaconing	
Regulatory		
EMI/EMC	EN 301 489-1; EN 301 489-3; EN 55024; EN 55032 Class A	
Electrical Safety	IEC 62368-1, EN 62368-1	
Cyber Security	EN18031-1,2	
RF Exposure	EU: EN 50364, EN 62369-1, EN 50566, EN 62311	
User Environment		
Operating Temp.	-20°C to 55°C (-4°F to 131°F)	
Storage Temp.	-40°C to 80° (-40°F to 176°F)	
Humidity	5% to 95% RH (non-condensing)	
Tumble Test	2,000 times 1.6ft / 0.5m tumbles (without boots), 1,000 times 3.2ft / 1m tumbles (with boots)	
Drop Test	1.5m, 1.8m (with boots) drops to concrete across the operating temperature range per MIL-STD-810H	
Sealing	IP68	
Vibration	Sine: 4g's peak, 5hz to 2khz, Random: 0.04g²/hz, 20hz to 2khz	
Thermal Shock	-30°C to 70°C rapid transition	
ESD	+/- 15kV air, +/-8kV contact discharge, +/-8kV indirect contact discharge	
Interactive Sensor Technology (IST)		
Light Sensor	Automatically adjusts the brightness of the display	

Magnetometer Sensor	eCompass automatically detects direction and orientation
Motion Sensors	Gyro sensor, accelerometers for X,Y, and Z movement, and gyroscopes for measuring the extent and rate of rotation in space
Proximity Sensor	Detects the presence of nearby objects without any physical contact; detects accidental touchscreen taps during telephone calls
Environmental Compliance	
Directive 2011/65/EU, Directive (EU) 2015/863	
Warranty	
Subject to the terms of M3 Mobile's hardware warranty statement, the SM30 series is warranted against defects in workmanship and materials for a period of 1 (one) year from the date of shipment. For complete warranty statement.	

5.2 Service

If you have any questions or complaints with using our product, please contact M3 Service Center or visit our Web site (<http://itc.m3mobile.net>). We do our best to immediately respond to your inquiry.

The M3 FAQ document may help resolve general problems.

For any questions on work programs, please contact the program supplier for faster service.

5.3 Contacts

● Head Office

Unit 1107~1109, Acetechnotower 10th round, 196, Gasan digital 1-ro, Geumcheon-gu, Seoul, Korea, 08502

Tel: +82 2 574 0037, Fax: +82 2 558 1253

www.m3mobile.net sales@m3mobile.co.kr sales_eu@m3mobile.net

● M3 Mobile GmbH

M3 Mbile GmbH, Am Holzweg 26, 65830 Kriftel, Germany

Tel: +49 6192 9222150, sales_eu@m3mobile.net

● Service Center

Unit 1107~1109, Acetechnotower 10th round, 196, Gasan digital 1-ro, Geumcheon-gu, Seoul, Korea, 08502

Tel: +82 2 574 0037, Fax: +82 2 556 0155, cs@m3mobile.co.kr

● M3 Mobile GmbH Service Center

M3 Mble GmbH, Am Holzweg 26, 65830 Kriftel, Germany

Tel: +49 6192 9222150, cs_gmbh@m3mobile.co.kr

- **ITC (M3 Mobile Information & Technology Center)**

<http://itc.m3mobile.net>, it@m3mobile.co.kr

